

# SECU C550

The SECU C550 boom is a floating barrier designed to prevent the navigation of heavy vessels (shuttle, dugout canoe, barge).



**COMPOSITION:**

- Rotomolded polyethylene floats mounted on a galvanized steel tube.
- Chains and shackles provided for shore connection.

**Available colors:**




**Technical Specifications**

Dimensions

L (mm)	D (mm)	I (mm)	E (mm)	d (mm)
6,000	550	1,100	600	80

Floats

Weight (kg)	Max. tension (T)
14,5	50



**CONNECTION SYSTEM**

- Chains + Shackles + Customized Anchors (See Annex p. 10).
- Option to integrate a boat passage gate, allowing authorized vessels to pass without splitting the boom.
- Option to integrate an energy dissipator for shock absorption.

**STANDARD CONFIGURATION**

- Modules of 6 m equipped with 4 floats.

**IMPLEMENTATION**

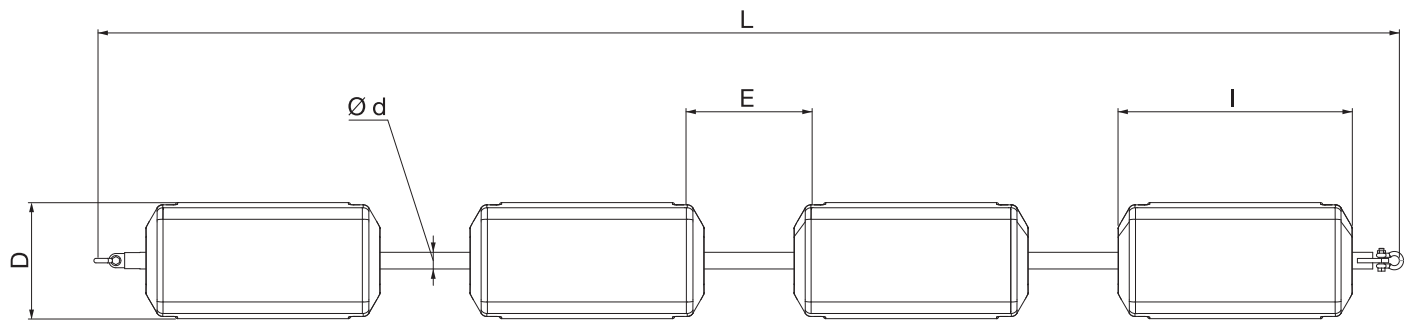
- Delivered in separate components.
- Assembly of modules on the bank.

**MAINTENANCE**

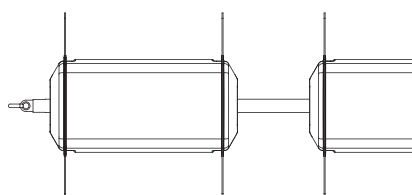
- No specific maintenance required (visual inspection).
- Damaged modules can be easily and independently replaced.
- It is possible to order individual floats for replacement.

**SERVICES**

- Layout plan and special parts available on request.
- Possibility to produce a calculation note with load distribution to anchors and boom deformation.



**DEFENSE VERSION**  
Option to add anti-crossing stars with a diameter of 1 m for military applications.



"Stars" Option

D <sub>2</sub> (mm)	H (mm)
1,000	450

